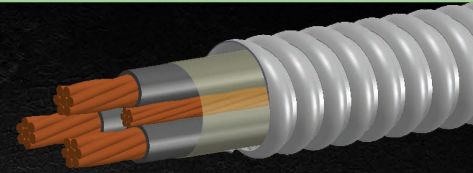


# Large Feeder MC Cables

## 1/0-3 through 750kcmil/4 Now Available!



When time counts – count on Kaf-Tech. Providing cost effective alternatives to conventional wiring methods.

### Description Sizes:

- Interlocking Aluminum Strip – RoHS Compliant
- Stranded Copper Conductors – Black with Numbering
- Insulated Conductors – XHHW-2
- Overall Assembly Tape
- Maximum Temp: 90°C (dry)
- Grounding: One bare copper grounding conductor
- Neutral Conductor: Black
- Maximum Voltage: 600V

### References & Ratings:

- UL 83, 1479, 1569, 1581, 2556, File Reference E135326
- NEC 230.43, 300.22(C), 392, 396, 330, 501, 502, 503, 530, 504, 505 518, 520
- Cable Tray Rated, install per NEC
- Made in the USA of US and/or imported materials

Product Code	Trade Size (AWG/kcmil) - CDR Count	Bare Grounding Conductor AWG (in)	Length (ft) Reel	Approximate Weight/1000 Feet (lbs)	Armor Minimum O.D. (in)
2170-99-00*	1/0-3	6	††	1,398	1.310
2171-99-00*	1/0-4	6	††	1,789	1.430
2172-99-00*	2/0-3	6	††	1,689	1.410
2173-99-00*	2/0-4	6	††	2,174	1.550
2174-99-00*	3/0-3	4	††	2,098	1.510
2175-99-00*	3/0-4	4	††	2,700	1.650
2176-99-00*	4/0-3	4	††	2,586	1.630
2177-99-00*	4/0-4	4	††	3,295	1.790
21AA-99-00	250/3	4	††	3,123	1.810
21AB-99-00	250/4	4	††	4,027	1.990
21AC-99-00	300/3	3	††	3,654	1.930
21AD-99-00	300/4	3	††	4,717	2.130
21AE-99-00	350/3	3	††	4,224	2.050
21AF-99-00	350/4	3	††	5,465	2.250
21AG-99-00	400/3	3	††	4,712	2.170
21AH-99-00	400/4	3	††	6,104	2.370
21AJ-99-00	500/3	2	††	5,842	2.330
21AK-99-00	500/4	2	††	7,585	2.570
21AL-99-00	600/3	2	††	6,948	2.570
21AM-99-00	600/4	2	††	9,040	2.850
21AN-99-00	750/3	1	††	8,618	2.850
21AP-99-00	750/4	1	††	11,212	3.090

Note: †† = Cut to Length

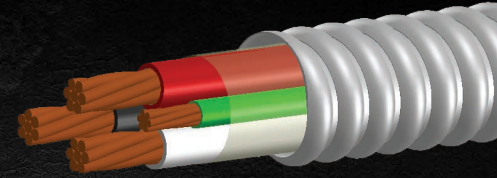
\* Denotes stocked items, other trade sizes are available by special order. Overall PVC jacket is available by special order on all items.



For more info visit [atkore.com/kaftech](http://atkore.com/kaftech) 

# Feeder MC-Lite with Aluminum Armor

## New Long Length Reels Available



### Description Sizes 8-2 through 1-4 AWG:

- Interlocking Aluminum Armor - RoHS Compliant
- Stranded (grounds may be solid in certain sizes) - Color identified (see chart)
- Insulated Conductors - THHN/THWN
- Overall Polypropylene Assembly Tape
- Maximum Temp: 90°C (dry)
- Grounding: One insulated copper grounding conductor
- Neutral Conductor: white (120/208V), gray (480Y/277V)
- Maximum Voltage: 600V

### References & Ratings:

- UL 83, 1479, 1569, 1581, 2556, File Reference E80042
- NEC 230.43, 300.22(C), 392, 396, 330, 501, 502, 503, 530, 504, 505, 518, 520
- Federal Specifications A-A-59544 (formerly J-C30B)
- Meets all applicable OSHA and HUD requirements
- Cable Tray Rated, install per NEC
- UL Classified 1, 2, and 3 hour through (fire) penetration product, R-14141
- Made in the USA of US and/or imported materials

Product Code		Trade Size (AWG/kcmil) - CDR Count	Bare Grounding Conductor AWG (in)	Length (ft) Reel		Approximate Weight/1000 Feet (lbs)	Armor Minimum O.D. (in)	Dimensions	
Large Reel	Small Reel			Large Reel	Small Reel			Large Reel	Small Reel
2115-70-00	2115-60-00	8-2 (black/white)	10 solid green	5000	1000	265	0.635	48x33x22	30x16x12
2115-70-01	-	8-2 (brown/gray)	10 solid green	5000	-	265	0.635	48x33x22	-
2116-70-00	2116-60-00	8-3 (black/red/white)	10 solid green	5000	1000	335	0.685	48x33x22	34x15x14
2116-70-01	-	8-3 (brown/orange/gray)	10 solid green	5000	-	335	0.685	48x33x22	-
2117-70-00	2117-60-00	8-4 (black/red/blue/white)	10 solid green	5000	1000	415	0.835	60x32x32	36x24x17
2117-70-01	-	8-4 (brown/orange/yellow/gray)	10 solid green	5000	-	415	0.835	60x32x32	-
2119-69-00	2119-60-00	6-2 (black/white)	8 green	4000	1000	370	0.795	48x33x22	34x15x14
2119-69-01	-	6-2 (brown/gray)	8 green	4000	-	370	0.795	48x33x22	-
2120-69-00	2120-60-00	6-3 (black/red/white)	8 green	4000	1000	480	0.855	60x32x32	36x24x17
2120-69-01	-	6-3 (brown/orange/gray)	8 green	4000	-	480	0.855	60x32x32	-
2121-69-00	2121-60-00	6-4 (black/red/blue/white)	8 green	4000	1000	595	0.945	60x32x32	36x24x17
2121-69-01	-	6-4 (brown/orange/yellow/gray)	8 green	4000	-	595	0.945	60x32x32	-
2124-65-00	2124-60-00	4-3 (black/red/white)	8 green	2500	1000	690	1.035	48x33x22	36x24x17
2125-65-00	2125-60-00	4-4 (black/red/blue/white)	8 green	2500	1000	870	1.135	60x32x32	40x24x17
2128-66-00	2128-60-00	3-3 (black/red/white)	6 green	2000	1000	815	1.025	48x33x22	40x24x17
2129-66-00	2129-60-00	3-4 (black/red/blue/white)	6 green	2000	1000	1,025	1.120	50x32x24	40x24x17
2126-66-00	2126-60-00	2-3 (black/red/white)	6 green	2000	1000	1,000	1.180	50x32x24	40x24x17
2127-36-00	2127-60-00	2-4 (black/red/blue/white)	6 green	1500	1000	1,260	1.295	50x32x24	45x28x21
2137-36-00	-	1-3 (black/red/white)	6 green	1500	-	1,195	1.185	48x33x22	-
2138-36-00	-	1-4 (black/red/blue/white)	6 green	1500	-	1,500	1.393	50x32x24	-

See Reverse Sheet for Standard Lengths of Steel & Aluminum Feeder Size MC Cable



For more info visit [atkore.com/kaftech](http://atkore.com/kaftech)



# Feeder Size MC Cable with Aluminum or Galvanized Steel Armor

## Description Sizes 8-2 through 1-4 AWG:

- Galvanized Interlocking Steel Strip or Interlocking Aluminum Armor
- Stranded (grounds may be solid in certain sizes) - Color identified (see chart)
- Insulated Conductors - THHN/THWN
- Overall Polypropylene Assembly Tape
- Maximum Temp: 90°C (dry)
- Grounding: One insulated copper grounding conductor
- Neutral Conductor: white (120/208V), gray (480Y/277V)
- Maximum Voltage: 600V

## References & Ratings:

- UL 83, 1479, 1569, 1581, 2556, File Reference E80042
- NEC 230.43, 300.22(C), 392, 396, 330, 501, 502, 503, 530, 504, 505, 518, 520
- Federal Specifications A-A-59544 (formerly J-C30B)
- Meets all applicable OSHA and HUD requirements
- Cable Tray Rated, install per NEC
- UL Classified 1, 2, and 3 hour through (fire) penetration product, R-14141
- Made in the USA of US and/or imported materials

### Aluminum

Product Code		Trade Size (AWG/kcmil) - CDR Count	Bare Grounding Conductor AWG (in)	Length (ft) Reel		Approximate Weight/1000 Feet (lbs)	Armor Minimum O.D. (in)
Large Reel	Small Reel			Large Reel	Small Reel		
2115-40-00	2115-45-00	8-2 (black/white)	10 solid green	200	500	265	0.635
2115-40-01	2115-45-01	8-2 (brown/gray)	10 solid green	200	500	265	0.635
2116-40-00	2116-45-00	8-3 (black/red/white)	10 solid green	200	500	335	0.685
2116-40-01	2116-45-01	8-3 (brown/orange/gray)	10 solid green	200	500	335	0.685
2117-32-00	2117-45-00	8-4 (black/red/blue/white)	10 solid green	125	500	415	0.835
2117-32-01	2117-45-01	8-4 (brown/orange/yellow/gray)	10 solid green	125	500	415	0.835
2119-32-00	2119-45-00	6-2 (black/white)	8 green	125	500	370	0.795
2120-32-00	2120-45-00	6-3 (black/red/white)	8 green	125	500	480	0.855
2120-32-01	2120-45-01	6-3 (brown/orange/gray)	8 green	125	500	480	0.855
2121-30-00	2121-45-00	6-4 (black/red/blue/white)	8 green	100	500	595	0.945
2121-30-01	2121-45-01	6-4 (brown/orange/yellow/gray)	8 green	100	500	595	0.945
2124-30-00	2124-45-00	4-3 (black/red/white)	8 green	100	500	690	1.035
2125-30-00	2125-45-00	4-4 (black/red/blue/white)	8 green	100	500	870	1.135
2128-30-00	2128-45-00	3-3 (black/red/white)	6 green	100	500	815	1.025
2129-30-00	2129-45-00	3-4 (black/red/blue/white)	6 green	100	500	1,025	1.120
2126-30-00	2126-45-00	2-3 (black/red/white)	6 green	100	500	1,000	1.180
2127-30-00	2127-45-00	2-4 (black/red/blue/white)	6 green	100	500	1,260	1.295
2137-36-00	2137-45-00	1-3 (black/red/white)	6 green	100	500	1,195	1.185
-	2138-99-00	1-4 (black/red/blue/white)	6 green	TT	-TT	1,500	1.400

Note: †† = Cut to Length

### Steel

Product Code		Trade Size (AWG/kcmil) - CDR Count	Bare Grounding Conductor AWG (in)	Length (ft) Reel		Approximate Weight/1000 Feet (lbs)	Armor Minimum O.D. (in)
Large Reel	Small Reel			Large Reel	Small Reel		
1715-40-00	1715-45-00	8-2 (black/white)	10 solid green	200	500	329	0.651
1716-40-00	1716-45-00	8-3 (black/red/white)	10 solid green	200	500	432	0.704
1717-32-00	1717-45-00	8-4 (black/red/blue/white)	10 solid green	125	500	511	0.852
1719-32-00	1919-45-00	6-2 (black/white)	8 green	125	500	462	0.795
1720-32-00	1720-45-00	6-3 (black/red/white)	8 green	125	500	594	0.855
1721-30-00	1721-45-00	6-4 (black/red/blue/white)	8 green	100	500	860	0.945
1724-30-00	1724-45-00	4-3 (black/red/white)	8 green	100	500	985	1.035
1725-30-00	1725-45-00	4-4 (black/red/blue/white)	8 green	100	500	1,195	1.135
1728-30-00	1728-45-00	3-3 (black/red/white)	6 green	100	500	1,070	1.025
1729-30-00	1729-45-00	3-4 (black/red/blue/white)	6 green	100	500	1,260	1.120
1726-30-00	1726-45-00	2-3 (black/red/white)	6 green	100	500	1,340	1.180
1727-30-00	1727-45-00	2-4 (black/red/blue/white)	6 green	100	500	1,640	1.295
1737-30-00	1737-45-00	1-3 (black/red/white)	6 green	100	500	1,530	1.185



For more info visit [atkore.com/kaftech](http://atkore.com/kaftech)

